

Green Data Center: Energy Reduction Strategies

Airside Economization and Unique Indirect Evaporative Cooling

Executive summary

The Green Data Center Project was a successful effort to significantly reduce the energy use of the National Snow and Ice Data Center (NSIDC). Through a full retrofit of a traditional air conditioning system, the cooling energy required to meet the data center's constant load has been reduced by over 70% for summer months and over 90% for cooler winter months. This significant reduction is achievable through the use of airside economization and a new indirect evaporative cooling cycle. One of the goals of this project was to create awareness of simple and effective energy reduction strategies for data centers. Although this particular project was able to maximize the positive effects of airside economization and indirect evaporative cooling because of its geographic location, similar strategies may also be relevant for many other sites and data centers in the United States.

Introduction

Current developments and enhancements in digital technology and communication are causing significant growth in the information technology (IT) industry.

Data centers provide a clean, safe, and stable environment for online servers to be maintained physically and virtually at all hours of the day. Secure facilities across the U.S. house anywhere from a few dozen to a few thousand servers. And in 2010, there were over 11 million servers installed in the United States¹. Many of these computers are meticulously



The above photo shows the Coolerado units installed at the National Snow and Ice Data center in May 2011. Photo used with permission from the National Snow and Ice Data Center.

maintained for peak performance, and the physical environment where they are stored must be kept clean, free of static electricity, and maintained within specific air quality standards. So while improvements in energy efficiency are important, air quality and reliability are also critical to data centers.

Background

The NSIDC provides data for studying the “cryosphere”—those areas of the planet where snow or ice exist. The two most extensive regions are Antarctica and the Arctic but high elevation regions are also important as they contain glaciers, and permanent ice and snow fields. The Center began operations at the University of Colorado in 1976. Some of the data held at NSIDC indicates dramatic changes in the cryosphere over the past decade and many of these changes have been attributed to global warming. NSIDC has operated a Distributed Active Archive Data Center (DAAC) for NASA's Earth Observing System since 1992. The data managed by the DAAC computer systems are distributed to scientists around the world. In order to deliver these cryospheric data to national and international clients, the data center must be online around the clock. The NSIDC computers are housed in a secure facility within a mixed use office and research building located in Boulder, Colorado and operates continuously.

In 2008, the Uptime Institute said that annually, global data center carbon dioxide emissions are poised to equal that of the airline industry if current trends persist, and it estimated that data center carbon dioxide emissions will quadruple between 2010 and 2020 [2].

The irony of the NSIDC's situation stems from the fact that the use of tools (the data center) necessary to study the problem (climate change) are actually contributing to the problem. When it became necessary to replace and upgrade the existing cooling infrastructure, all options were considered. And in particular, solutions that would reduce demand and dependency on the local utility provider were given high priority.

Computers use a significant amount of electrical energy. Most of this energy is converted into heat within a computer that must then be exhausted. Otherwise, damage to the electronics could occur. The American Society of Heating, Refrigeration and Air

Conditioning Engineers (ASHRAE) has established an air state that is suitable for data centers and computer rooms³. The limits on this psychrometric “envelope” are shown in Table 1 and Fig. 1.

Humidity control in a data center is critical to stable operation. Too much moisture in the air allows for condensation, possibly leading to damage from short circuits to the delicate integrated circuits, power supplies, and other hardware. Too little humidity allows for static charge accumulation and potential damage from a single, large discharge could be significant. Exceeding a certain ambient air temperature can cause thermal damage to equipment. Low ambient temperatures can cause circuits and electricity flow to slow down, thus impeding the productivity of the computer.

To maintain an appropriate air state within the limits as described above, the type and control of the heating,

ventilating, and air conditioning (HVAC) system for a data center is a vital consideration.

The NSIDC aims to meet the ASHRAE Allowable Class 1 Computing Environment standard, as shown in Fig. 1. Internal review of manufacturer specifications revealed that all of the computer and information technology (IT) equipment in the data center would operate well under these conditions, and it would be unnecessary to control the system within the ASHRAE Recommended Environment standard, seen within the bounds of the Allowable Environment in Fig. 1.

Traditional Data Center Cooling Infrastructure

Traditionally, data centers have been cooled by standard (and often packaged or unitary) air conditioning systems that use a direct expansion (DX) heat removal process via a liquid refrigerant. This is the same type of cycle that runs the air conditioning in a car or runs a refrigerator. Although a robust and mature technology, the DX cycle has been under scrutiny for cooling data centers over the past decade as other technologies capable of producing the same amount of cooling with less energy requirement have entered the market and

Property		Recommended	Allowable
Dry-Bulb Temperature	High	80° F	90° F
	Low	64° F	59° F
Moisture	High	60% RH 64° F DP	80% RH 63° F DP
	Low	42° F DP	20% RH

Table 1. 2008 ASHRAE Psychrometric Envelope for data centers.

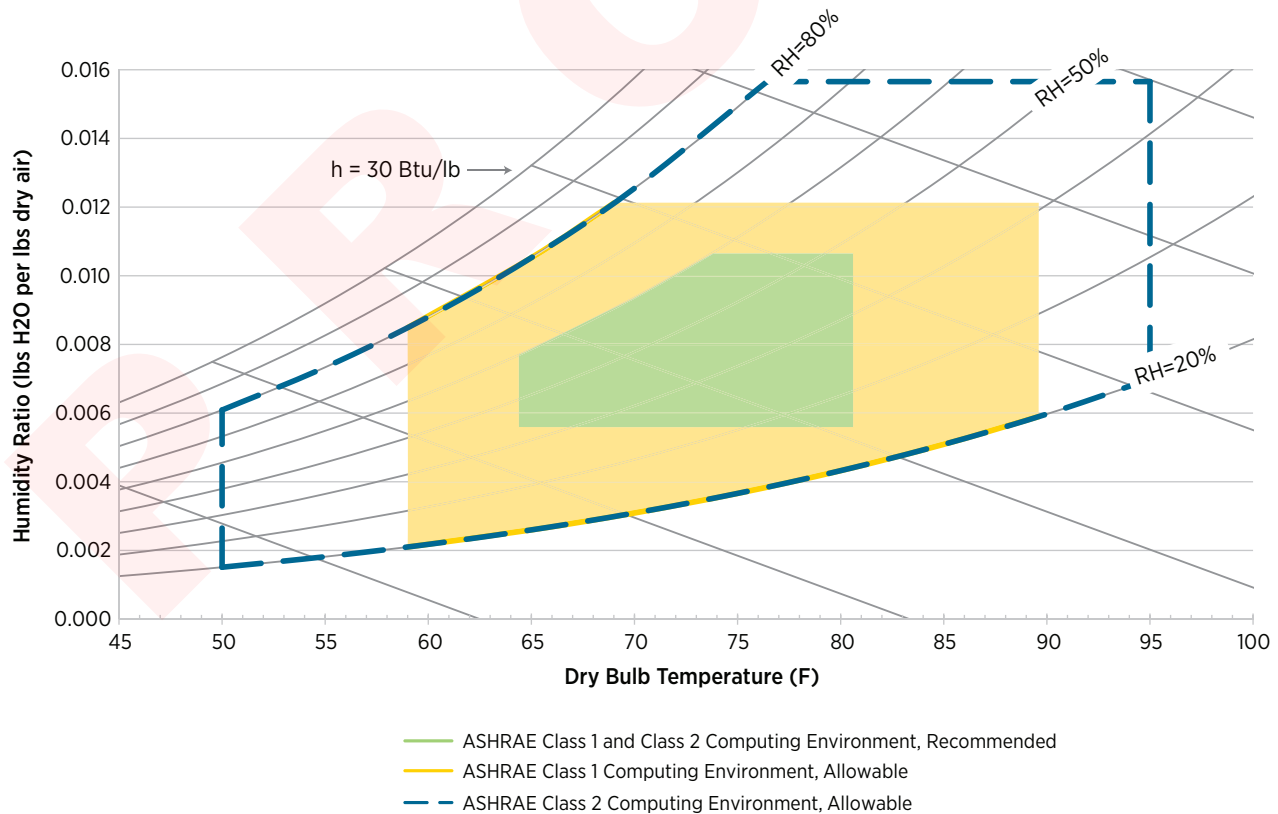
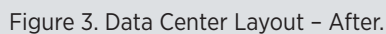
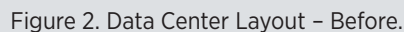


Figure 1. ASHRAE Allowable and Recommended Environment operating conditions for data centers.



become economically viable. The DX cycle requires environmentally harmful, synthetic refrigerants (i.e., R-22) and substantial electrical energy to run a compressor. Of all the parts in a DX air conditioner, the compressor requires the most energy. Up until the past few years, typical data centers have been cooled by these packaged DX systems, commonly referred to as computer room air conditioners (CRAC). These systems have been used in the past due to their off-the-shelf packaging, compact size, and simple controls. However, as the need for energy use reduction and environmentally friendly technology becomes more and more prevalent, the DX systems for data centers are becoming antiquated. The NSIDC operated 2 CRAC units full time until June 2011.

Most data centers are connected to a regional utility grid, as this has traditionally been the most reliable way available to power critical computer systems. Power is delivered to an uninterruptible power supply (UPS), which conditions and delivers power to the computers in a data center. This unit also typically charges a large battery array for use during a power outage. This allows the data center to remain online for at least an hour after a power disruption.

Reduced Energy Consumption System

The Green Data Center Project was separated into two main components: server consolidation and virtualization, and installing a more efficient cooling system. The two separate data centers in the building were consolidated into one (see Figures 4). The latter is the focus of this document, but it is important to realize that some energy reduction was achieved by simply reducing the IT load. The new cooling system design includes a unique cooling system that uses both airside economization and a new air conditioner that uses the efficient Maisotsenko Cycle⁴.

Airside Economization

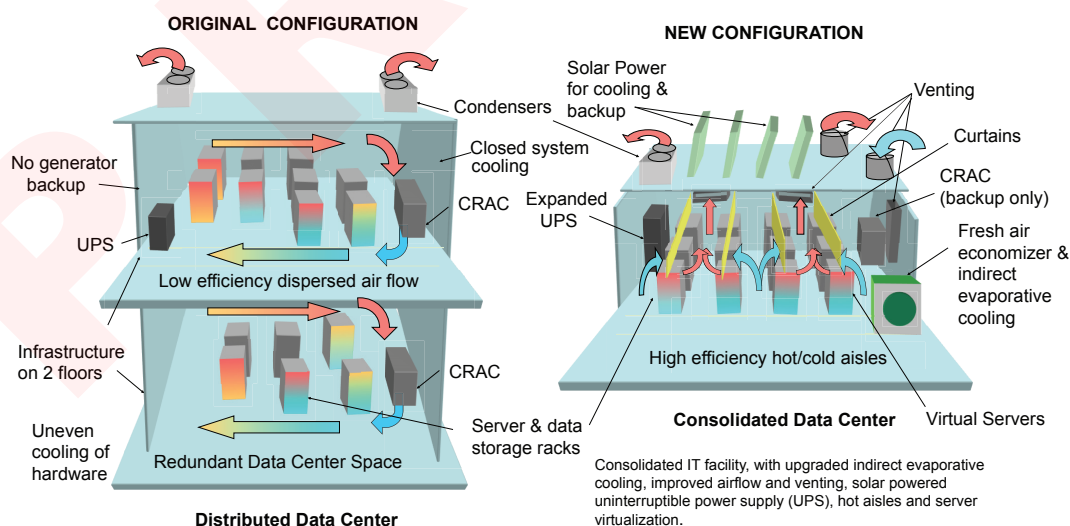
Airside economization is not a new technology, but does add some complexity to the control system. Simply put, an airside economizer is just a control mode that allows the air handling unit (AHU) to cool the space solely with outdoor air when the outdoor air is cooler than the air in the space. This is commonly referred to as “free cooling.” In this mode, no air conditioning (DX or other process) is required, and recirculation of room air is reduced to a minimum. As stated previously, humidity is an issue for computers and electronic systems. In the Southeastern part of the United

States, economizers may be limited due to the hot and humid climate. However, Colorado is much drier year round and cool enough for over 6 months of the year, so an airside economizer is a viable option for data centers to maintain an air state that is within the ASHRAE limits.

Indirect Evaporative Cooling

The centerpiece of the new system revolves around a series of Coolerado[®] air conditioners that utilize the Maisotsenko Cycle. This cycle uses both direct and indirect evaporative cooling to produce a supply air state that is indirect evaporative cooling to produce a supply air state that is at the dewpoint, which is typically 30° to 40° Fahrenheit below the incoming air temperature in Colorado.

A patented heat and mass exchanger (HMX) divides the incoming air stream into two streams: working air (WA) and product air (PA). The WA is directed into channels with wetted surfaces and cooled by direct evaporation. At the same time, adjacent channels carry PA without any water added from the wetted surfaces. The adjacency of these airstreams allows for indirect evaporative cooling of the PA stream. Heat is transferred to the WA stream by evaporation from an impermeable surface in contact with the PA stream. Cool PA is delivered directly to the computer room. Working air, warm



NSIDC RL-2 Green Data Center Project – NFS ARRA Project 0963204

Figure 4. These two images show before (left) and after (right) NSIDC data center configurations.

Note that this cooling process does not have a compressor or condenser in its cycle. Air from the AHU can now be cooled to a comparable cool temperature using an average of one tenth the energy that would be required by the CRAC system. Water is used in this cycle, and is only used once (single pass). Based on measurements, all eight of the Coolerado units consume an average of 3.79 liters per minute (1.0 gallon per minute) when in humidification mode, which is most of the winter. Unfortunately, similar

The new cooling system consists of a rooftop air handling unit (AHU) powered by a 7.5-kilowatt (10-horsepower) fan motor via a variable frequency drive (VFD), eight Coolerado air conditioners, and hot aisle containment. Fig. 5 shows a schematic of this system. Note that the AHU is completely responsible for the airside economization by regulating the amount of outdoor air; when the outdoor air is cool enough, the AHU introduces a mixture of this cool air with some return air from the backside of the server racks. Using the VFD and controls, the cooling system operates at 50% or less flow rate 90% of the time. Because of the fan law, when airflow is reduced by 50%, horsepower is reduced by 87.5%. This mixed supply air is introduced into the room and allowed to flow out from beneath the Coolerado air conditioners to keep the cool areas around 22.2°C

Measurement and Data

By late 2009, it was determined that the aging CRAC units operating in the NSIDC had to be replaced soon, as they were approaching the end of their useful life. One of them was actually rusting on the inside due to leaking water (these CRACs were equipped with humidification features). The energy consumption of these CRAC units needed to be monitored to determine the power use of the traditional system and calculate the overall efficiency of the data center. Although this could have been approximated by using nameplate ratings and efficiencies, actual energy consumption often varies significantly and can only be determined with proper monitoring equipment.

Relief air damper

Outside air damper

Roof mounted air handler unit

Hot Aisle

Curtain

Server Racks

Working Air Dampers

Humidified air to space

Cold Aisle

"Coolerado" cooling units total of eight

Unit Fan ECM variable speed motor

Integrated server rack cooling fans

- 1 **ECONOMIZER SUPPLY AIR** - The air handler unit mixes outside air with hot aisle return air to provide minimum 75° F economizer supply air temperature.
- 2 **COOLERADO PRODUCT SUPPLY AIR** - Provide either sensible cooled or humidified supply air as a needed to maintain cold aisle temperature and humidity setpoints.
- 3 **COOLERADO AISLE SUPPLY AIR** - A combination of outside air and product air. Setpoint is 72° F and 30 percent minimum relative humidity.
- 4 **HOT AISLE RETURN AIR** - Exhaust air off server racks will normally be around 95° F.
- 5 **RELIEF AIR** - Relief air damper will modulate in response to space pressure.
- 6 **RETURN AIR DAMPER** - Return air damper will control quantity of warm hot aisle return air with outside air in standard economizer mode.
- 7 **OUTSIDE AIR** - Outside air is utilized in all cooling modes. When outside air temperature is above 75° F the air handling unit provides 100 percent outside air meeting system requirements in both product and working air. Quantity of outside air increases as cooling units operate in cooling mode.
- 8 **COOLERADO WORKING AIR EXHAUST** - When the outside air temperature is too high to directly cool the space, the cooling units sensibly cool the product air by pulling the economizer air throughout the cooling unit heat exchange. The humid working air is directly exhausted outside without adding any humidity to the space.

Figure 5. Schematic of new cooling system for the NSIDC (winter operation).

Power meters were initially installed on the two existing CRAC units and the uninterruptible power supply (UPS). Data from these meters was collected over the period of 1.5 years.

Data Center Efficiency Determination

The Power Utilization Effectiveness (PUE) for any data center can be calculated using (1) for any specific point in time (using power in kilowatts), or a time period (using energy in kilowatt-hours)⁵.

$$\text{PUE} = \frac{\text{Total Power}}{\text{IT Power}} \quad (1)$$

It is important to point out that PUE is an *efficiency* metric, and by definition is normalized for different IT loads. Therefore two PUEs are comparable regardless of the IT load.

It should be noted that the NSIDC, like most data centers, operates an UPS in order to condition power and to maintain a large battery array for use during a grid electricity outage. And like all power electronic equipment, there are some losses through the UPS. The UPS currently installed at the NSIDC is only 87.7% efficient, which leads to a loss of 12.3% to power conditioning and conversion from AC to DC current needed to charge the backup battery array. This loss is accounted for in (1) by the difference between UPS Power and IT Power.

$$\begin{aligned} \text{Total Power} &= \text{Cooling Power} \\ &+ \text{UPS Power} + \text{Misc. Power} \end{aligned} \quad (2)$$

$$\begin{aligned} \text{IT Power} &= \\ \text{UPS Power} * \eta_{\text{UPS Efficiency}} \end{aligned} \quad (3)$$

IT Power refers to the actual power demand from the IT equipment (e.g., servers, network switches, and monitors). The sum of all equipment power uses at any point in time equals IT Power. UPS Power refers to the grid or input power supply required at the UPS. IT and UPS

Powers are related directly by the UPS efficiency as in (3). And Total Power includes the “extra” power consumed by the conversion losses through the UPS as in (2).

Inefficiency of CRAC System

Because the data center operates 24 hours per day, there is a constant need for cooling; and without airside economization to take advantage of cold winter air, the CRAC units used to operate the compressors 24 hours per day, and at near constant load. Therefore, the PUE of the CRAC system at the NSIDC didn't vary much with outdoor temperature from month to month. The new system allows the cooling power required to maintain the ASHRAE standard for the air state and to decrease more in correlation with the outdoor temperature.

When the new system (AHU and Coolerado air conditioners) was installed, more power meters had to be installed to account for all power uses of the cooling system (i.e., the AHU fan and the Coolerado air conditioners). For comparison purposes, monthly average PUEs to date were also calculated for the new system, and more significant seasonal variation is expected.

Employing hot aisle containment

The legacy data center had a non optimized data equipment layout, see Fig. 2. The NSIDC data center was reconfigured to a hot aisle/cold air configuration by rearranging the server racks and installing curtains, see Fig. 3. For schematics of the before after case see Figs 4. With the hot aisle containment, supply air can be delivered at a higher temperature, significantly reducing the cooling energy use. Plus, hot aisle containment allows supply air to be delivered at a lower flow rate since mixing is minimized.

Renewable Energy

NSIDC is installing a photovoltaic (PV) solar system that will be the first of its kind at the University of Colorado (CU). The panels are locally made (Loveland, CO) using unique, low cost, cadmium telluride (CdTe) thin-film solar panels. The array will use 720 panels producing

just over 50 kW. This power level will more than offset the power consumed by the data center when the sun is shining. The solar array also acts as a backup generator as the solar power is automatically diverted during a power failure to a battery array, which runs critical components. The Green Data Center is a research project and NSIDC will be testing this technology to see how it works compared to existing solar installations at the University. The inverters that are being used were manufactured in Denver, CO.

Results

Fig. 6 shows the reduction in PUE compared to the CRAC system. The CRAC system had an annual average PUE of 2.01. The new system has an average PUE to date (June through October 2011) of 1.55. This average will decrease through about April of 2012 because outdoor temperatures in Colorado are generally cool during this time of the year. And since September 1st, 2011, the monthly PUE has been below 1.35 due to the airside economization of cool fall and winter air temperatures. Note that the PUE in May of 2011 was actually higher than it was in 2010 because the CRAC system was still operational because the new system was undergoing commissioning and testing. During this time, the complex control sequences for the new system were being tuned. This issue was a single occurrence and should not happen again.

Fig. 7 shows the cooling energy comparison for the same total time period. The new system used less than 2.5 kilowatts of power on average for the month of October 2011. Compared to October 2010 (during which the IT load was only 33% higher and outdoor conditions were very similar), the average cooling power usage was almost 95% less. The average cooling power during the upcoming winter months of November 2011 through February 2012 should be similar because the winters in Colorado are generally very cool. Note that there was actually a slight increase in cooling power during the winter months of 2010 while using the CRAC system. Although

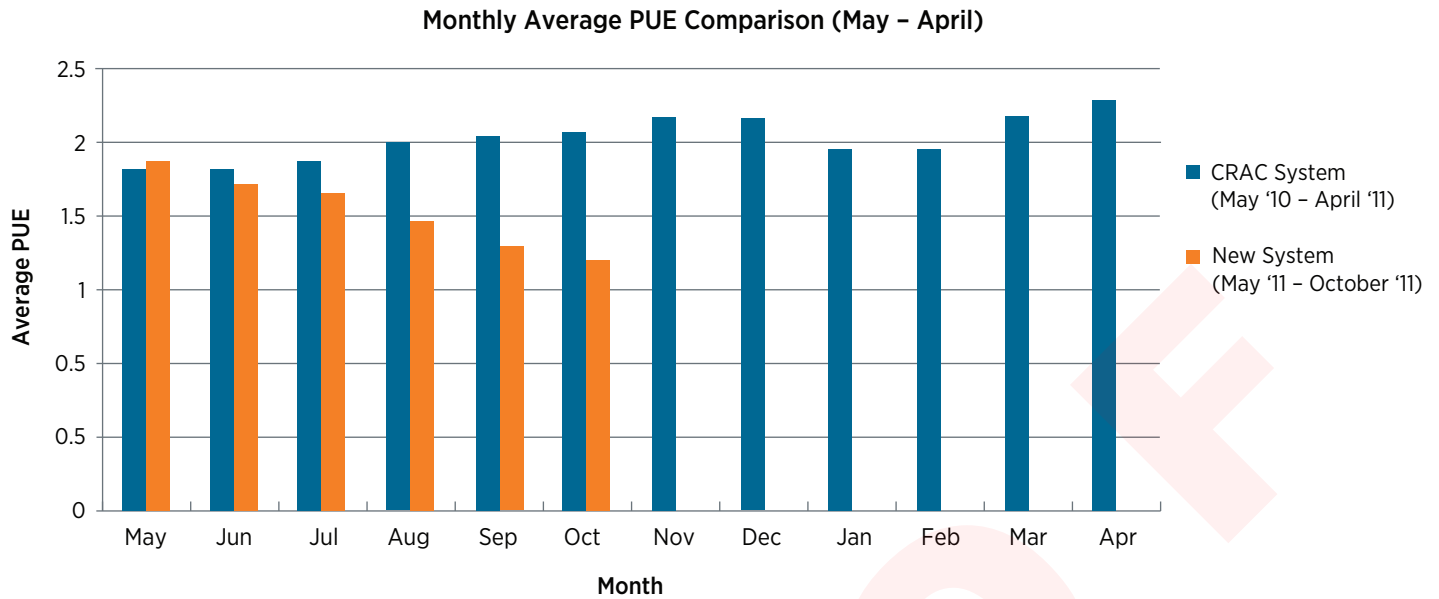


Figure 6. Monthly average PUE comparison.

it is not immediately clear what caused this, it was most likely due to the CRAC active humidification process that was necessary to maintain the lower humidity limit prescribed by applicable ASHRAE standards. The CRACs used a series of heat lamps (inside each unit) to evaporate water into the airstream. Obviously this is inherently inefficient because the air must

be cooled further to account for the heat added by the heat lamps. The new system actually produces very humid air as a byproduct (working air), and humidifying the space when necessary requires no additional energy.

The significant energy savings was accomplished while maintaining the 2008 ASHRAE standards for data center air

quality, meaning warranties on servers and IT equipment are still valid. Additionally, maintenance costs have been reduced to only air filter changes, which is a simple task. The Coolerado air conditioners are very simple, without any substantial moving hardware other than a small variable-speed electrically commutated motor (ECM) powering the fan.

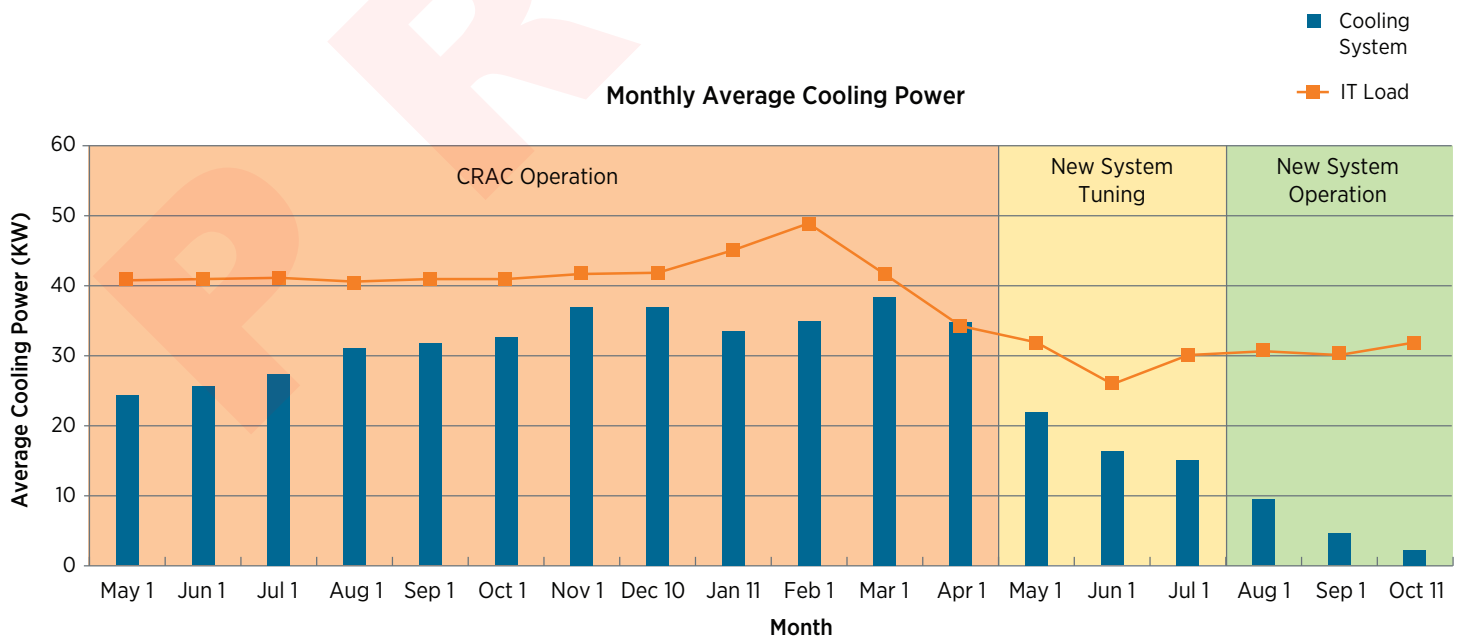


Figure 7. Monthly average cooling power comparison between CRAC system and new system.

Outreach

To ensure that operating conditions remain within the ASHRAE prescribed envelope, nearly 2 dozen sensors have been installed in the data center to measure temperatures, humidity and power use. To share this information with the public, two datalogging networks were installed in the room to collect, process, and display the data on the NSIDC's public website (<http://nsidc.org/about/green-data-center/>). The data can be used to monitor the current performance and the past day's trends in energy uses and temperatures.

The NSIDC hopes that this Green Data Center Project can serve as a successful case study for other data centers to look to and learn from.

Conclusion

The problems facing our planet require different approaches to traditional methods of operation, especially in the rapidly evolving and growing technology industry that consumes extraordinary

amounts of resources and indirectly contributes to global climate change. The solutions to these problems do not necessarily require extraordinary complexity nor need be expensive. This Green Data Center Project was completed for a modest sum relative to the substantial energy savings achieved.

Acknowledgment

The NSIDC would like to thank the RMH Group and NREL for their expert advice throughout the development of this project. Working together, the team was able to develop the low-energy design that has transformed the NSIDC into one of the most efficient data centers in the United States.

The NSIDC DAAC is operated with NASA support under Contract NNG08HZ07C to the University of Colorado. The Green Data Center cooling system was funded by an ARRA grant to upgrade existing research facilities from the National Science Foundation Grant CNS 0963204.

References

- ¹ J. Koomey, "Growth in data center electricity use 2005 to 2010," Analytics Press, Table 1, p. 20, August 1, 2011.
- ² Carmichael, Ben, "Data centers set to outpace airlines in GHG emissions," OnEarth Magazine, May 12, 2008. <http://www.onearth.org/blog/whats-happening-on-earth/data-centers-set-to-outpace-airlines-in-ghg-emissions>.
- ³ ASHRAE publication, "2008 ASHRAE environmental guidelines for datacom equipment," pp. 1-8, 2008.
- ⁴ "A technical description of the Maisotsenko cycle," Idalex Technologies, 2003, http://idalex.com/technology/how_it_works_-_technological_perspective.htm.
- ⁵ Verdun, Gary, et al, "The Green Grid metrics: data center infrastructure efficiency (DCiE) detailed analysis," The Green Grid, 2000.